

Beaver Pest Control is a leading London-based pest management company, now part of Orkin UK. Combining local expertise with Orkin's global resources, Beaver delivers smarter, data-led pest control solutions across London.

[pestcontrolsolutions.co.uk](https://pestcontrolsolutions.co.uk)

020 8355 3443



# INTELLISOLVE

Unlock the mystery.  
Outsmart the rodents.

## TACKLING A PERSISTENT PEST PROBLEM AT A HIGH-TRAFFIC CENTRAL LONDON RESTAURANT

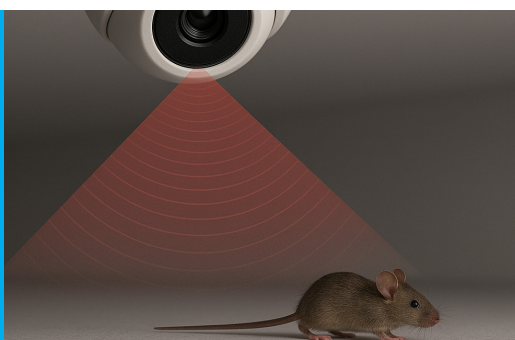
A leading UK restaurant brand faced an ongoing mouse infestation. Despite repeated efforts, including proofing works and conventional pest control, the issue persisted. Mice were regularly sighted in the basement kitchen and adjoining seating areas, peaking late in the evening and overnight.

IntelliSolve turned a long-standing infestation into a data-led success story. By using camera technology to uncover hidden behaviours, we replaced ineffective control methods with targeted solutions — achieving faster results, fewer disruptions, and renewed client confidence.



**60%**

Camera data showed a significant >60% reduction in mouse activity across key areas within the first week after intervention.



## IMPACT FOR THE INDUSTRY

This case demonstrates the importance of understanding rodent behaviour in complex environments. Camera-led diagnostics provide clarity where traditional monitoring fails.

## WHAT DOES THIS MEAN FOR BUSINESSES?

- ✓ Faster resolution of entrenched problems
- ✓ Competitive advantage when replacing underperforming providers
- ✓ Scalable solutions for complex or high-pressure environments

# CHALLENGES

## 01

### Complex ingress points

The building's design created multiple hidden entry routes for rodents. Shared services and poorly constructed internals allowed mice to move freely between units and service areas, making proofing works almost impossible to fully seal.

## 02

### Limited technician access

Large ceiling voids and confined service areas meant technicians had only brief windows of access. This severely limited the ability to carry out thorough inspections or apply consistent treatments across the site.

## 03

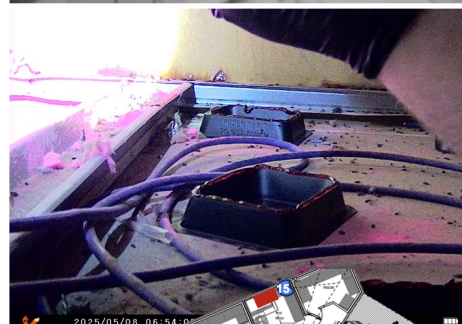
### Constant food sources

Aside from the small gap between 4:00–7:00 a.m., food debris was continuously available. This ensured rodents had a reliable food source around the clock, undermining the effectiveness of traditional baiting methods.

## 04

### High customer-facing risk

Mouse activity wasn't confined to back-of-house areas. Sightings extended to guest seating areas, creating a serious reputational risk for the restaurant and heightening the urgency for a reliable, long-term solution.



# THE SOLUTION

We shifted strategy: "You can't manage what you can't measure." Instead of relying on failed baiting, we installed 20 motion-sensor cameras across the site to map mouse behaviour. Over four weeks, cameras revealed:

- Mice bypassing and ignoring traps entirely
- Hotspot areas with high mice activity
- Clear behavioural resistance, likely due to past negative encounters with traps

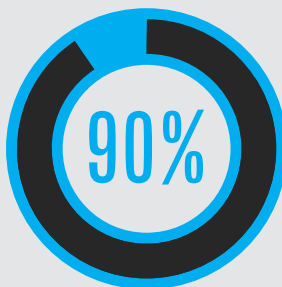
# THE BREAKTHROUGH

Armed with behavioural insights, we removed all redundant traps and baits. In their place, we introduced:

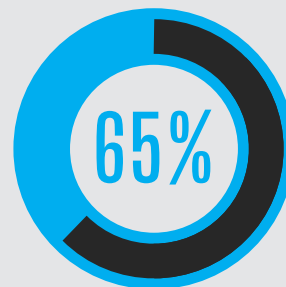
- Wooden snap traps
- Contact gel on painted cards
- Vertox trays baited with BBQ sauce (an unexpected but highly effective attractant)

# THE RESULTS

- Rapid engagement with the new control measures
- Significant reduction in mouse activity across key hotspots
- Renewed client confidence in proactive pest management



90% accuracy in identifying true activity zones compared to traditional monitoring methods.



65% reduction in mouse activity across key hotspots within the first week of IntelliSolve-informed interventions.